

# Voltage Controlled Clock

Thru Hole



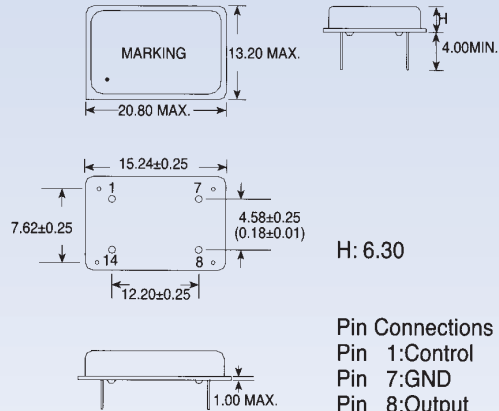
## ADVXOH



### FEATURES

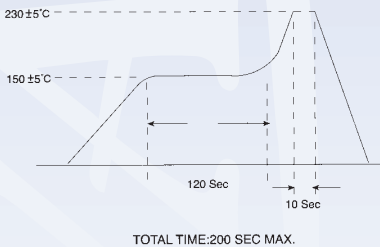
- Frequency adjustable
- Superior quality
- Low power consumption
- Application: Data communications, Set top box, ADSL modem.

### UNIT DIMENSION (unit: mm)

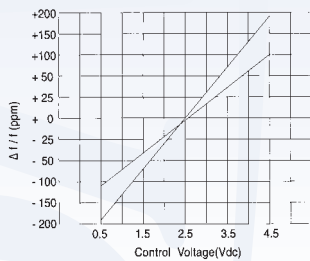


Pin Connections  
 Pin 1:Control  
 Pin 7:GND  
 Pin 8:Output  
 Pin 14:+Vcc

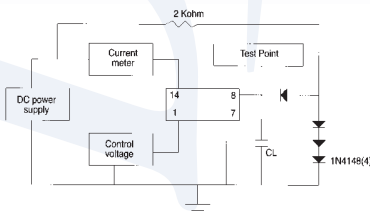
### SOLDERING REFLOW PROFILE



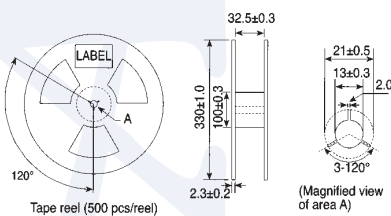
### FREQUENCY/MODULATION VOLTAGE CHARACTERISTICS



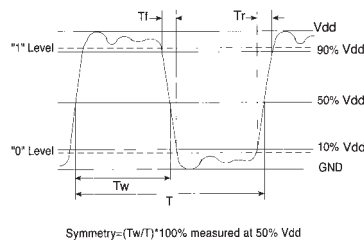
### TEST CIRCUIT



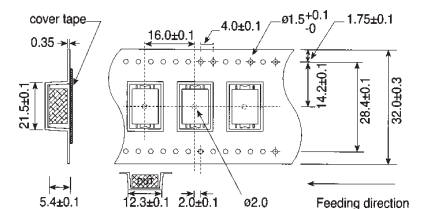
### REEL PACKING (UNIT: mm)



### OUTPUT WAVEFORM FOR CMOS



### TAPE SPECIFICATIONS



### STANDARD SPECIFICATIONS

Package Type	ADVXOH	
Standard Frequency	8.192, 10.24, 16.384, 27, 35.328 MHz	
Frequency Range	8 ~ 52 MHz	
Frequency Stability vs. Temperature Range	±50 ppm (0°C ~ 50°C) ±50 ppm (0°C ~ 70°C)	±30 ppm (-20°C ~ 60°C) Custom
Frequency Control Voltage	2.5 ±2.0 Vdc	
Frequency Control Range	±100 ppm min.	
Output Load	2 TTL or CMOS	
Output Symmetry (Tw/T)	40% ~ 60%	
Supply Voltage	5.0 ±0.25 Vdc	
Aging	±5 ppm/year	

# Voltage Controlled Clock OSC.

Surface Mount &amp; Thru Hole

ADVCXO Series



Package Type	ADVCXOG4	pg49	ADVCXOI	pg50
	ADVCXOG6	pg49	ADVCXOH	pg52
Frequency Stability	±100 ppm	A	±25 ppm	D
	±50 ppm	B	Custom	E
	±30 ppm	C		
Duty Cycle	45/55%	5	40/60%	6
Deviation	±100 ppm min	A	±50 ppm min	C
	±75 ppm min	B	±200 ppm min	D
Linearity	20%	A	10%	C
	15%	B	None	Blank
Output	TTL	A	CMOS Compatible	C
	CMOS	B		

## EXAMPLE

