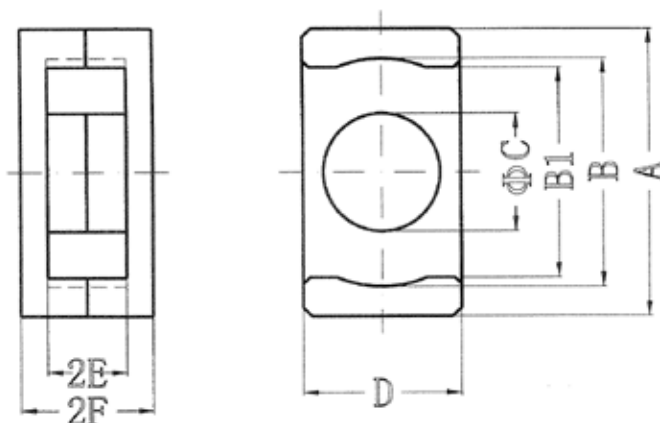


ER CORES



TYPE		ER9.5	ER11	ER14.5
DIMENSIONS (mm)	A	9.65 ± 0.15	10.8 ± 0.2	14.5 ± 0.2
	B	7.65 ± 0.15	8.85 ± 0.15	11.8 ± 0.2
	B1	7.2 ± 0.1	8.1 ± 0.1	
	C	3.4 ± 0.1	4.1 ± 0.15	4.7 ± 0.1
	D	4.9 ± 0.1	5.9 ± 0.1	6.7 ± 0.1
	2E	3.35 ± 0.15	3.15 ± 0.15	3.3 ± 0.2
	2F	4.9 ± 0.1	4.9 ± 0.1	5.9 ± 0.1
CORE FACTOR	$C_j(\text{mm}^{-1})$	1.67	1.23	1.08
EFFECTIVE LENGH	$l_e(\text{mm})$	14.2	14.7	19
EFFECTIVE AREA	$A_e(\text{mm}^2)$	8.47	11.9	17.6
EFFECTIVE VOLUME	$V_e(\text{mm}^3)$	120	174	333
APPROX WEIGHT/set	W(g)	0.7	1.0	1.8
A_L VALUE (nH ± 25%)	JP4A	850	1200	1400
	JH5			
	JH7			
	JH10	3600	5000	