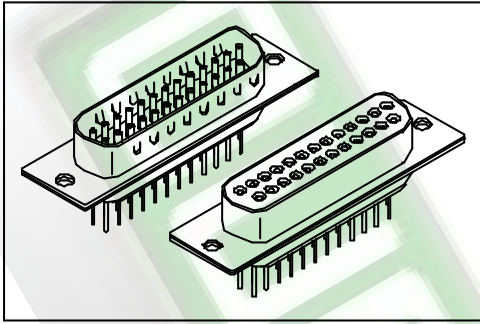


# 7905 Series

## D-SUB Straight Type



### Material:

**Housing:** 30% Glass filled PBT UL94V-0.

**Contacts:** Brass.

**Plating:** Gold plated.

### Electrical Characteristics:

**Current Rating:** 1 AMP.

**Insulator Resistance:** 5000M $\Omega$ min. at DC 500V.

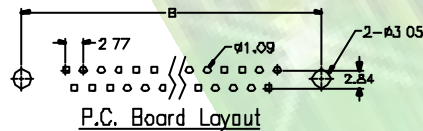
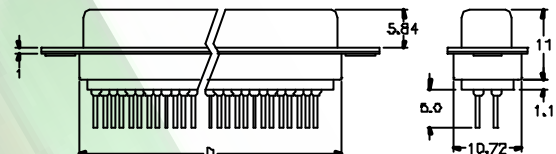
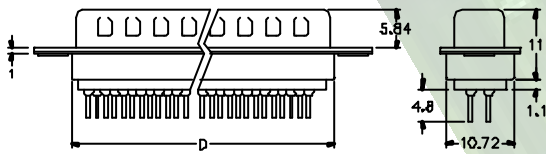
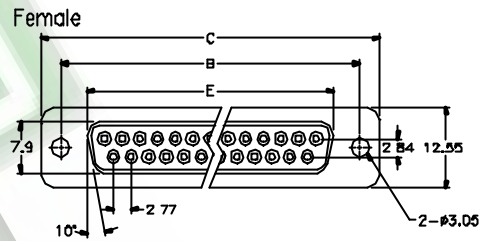
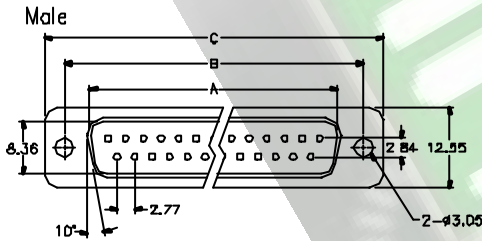
**Contact Resistance:** 20m $\Omega$ max. at DC 100mA.

**Operating Temperature:** -55°C~+105°C.

### Features:

\* UL cUL Listing.

Mates with: 7901, 7907, 7908.



Position	Dimension				
	A	B	C	D	E
9	16.92	24.99	30.81	19.28	16.33
15	25.25	33.32	39.14	27.51	24.66
25	38.96	47.04	53.04	41.30	38.38
37	55.42	63.50	69.32	57.71	54.84

## Ordering information

7905-37

Series

M

Position

M

M: Male

F: Female

I

T: Tin Shell

E: Zinc Shell

U

U: Blue

B: Black

W: White

C

C: Selective Gold Plated

N1

Blank: Standard Type

N1: See Page B52